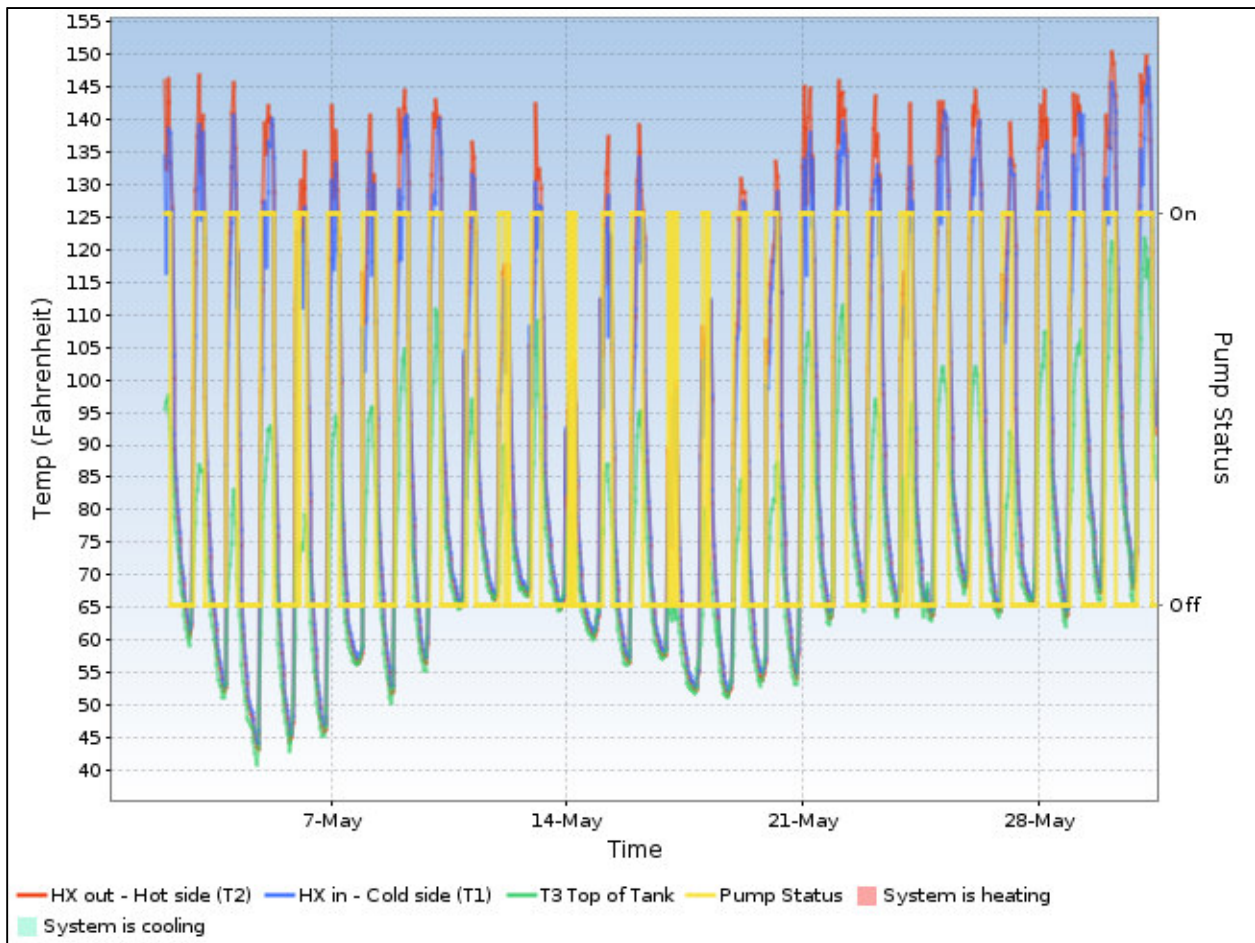
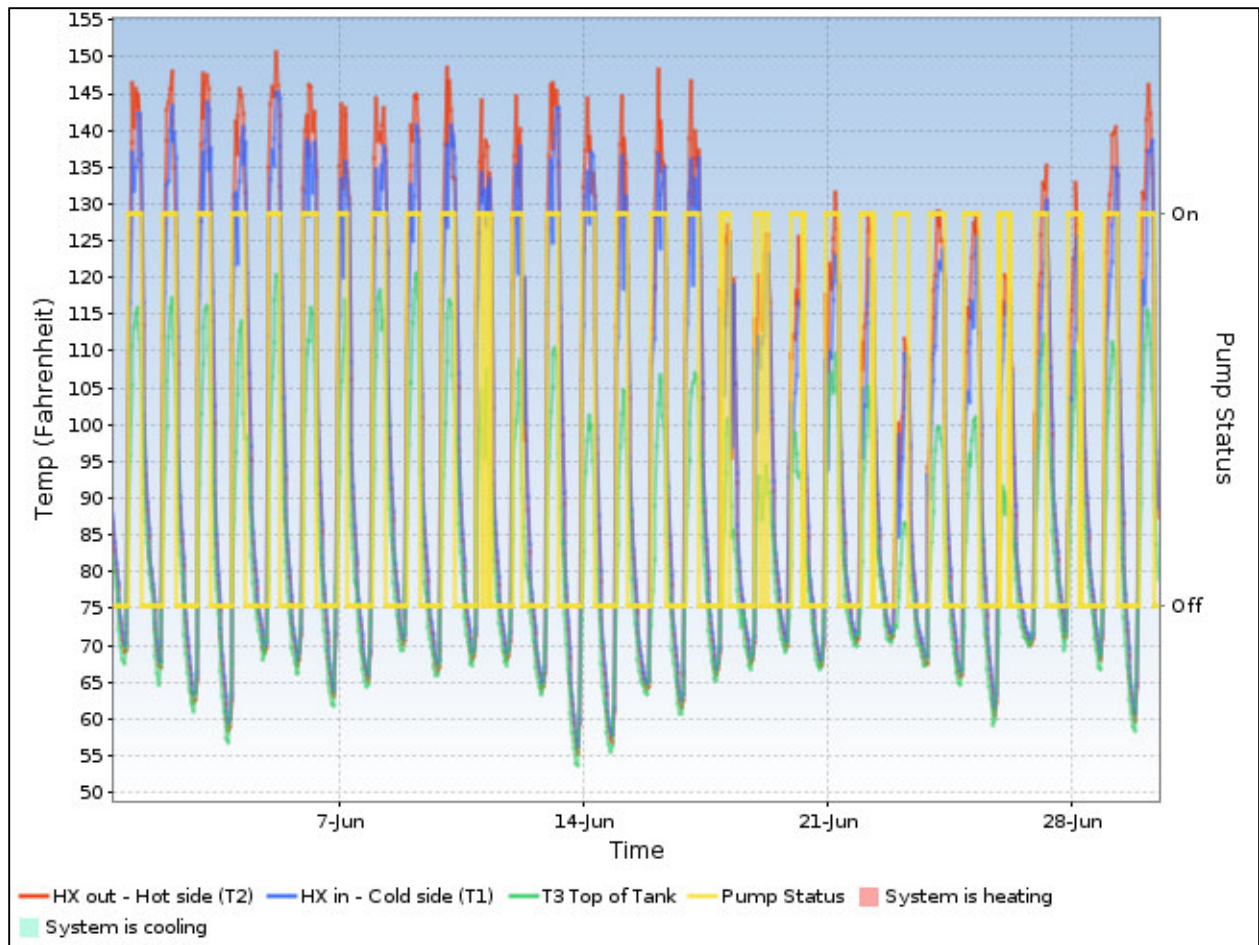


Rowland Court Apartments Solar-Hot-Water Energy Collection

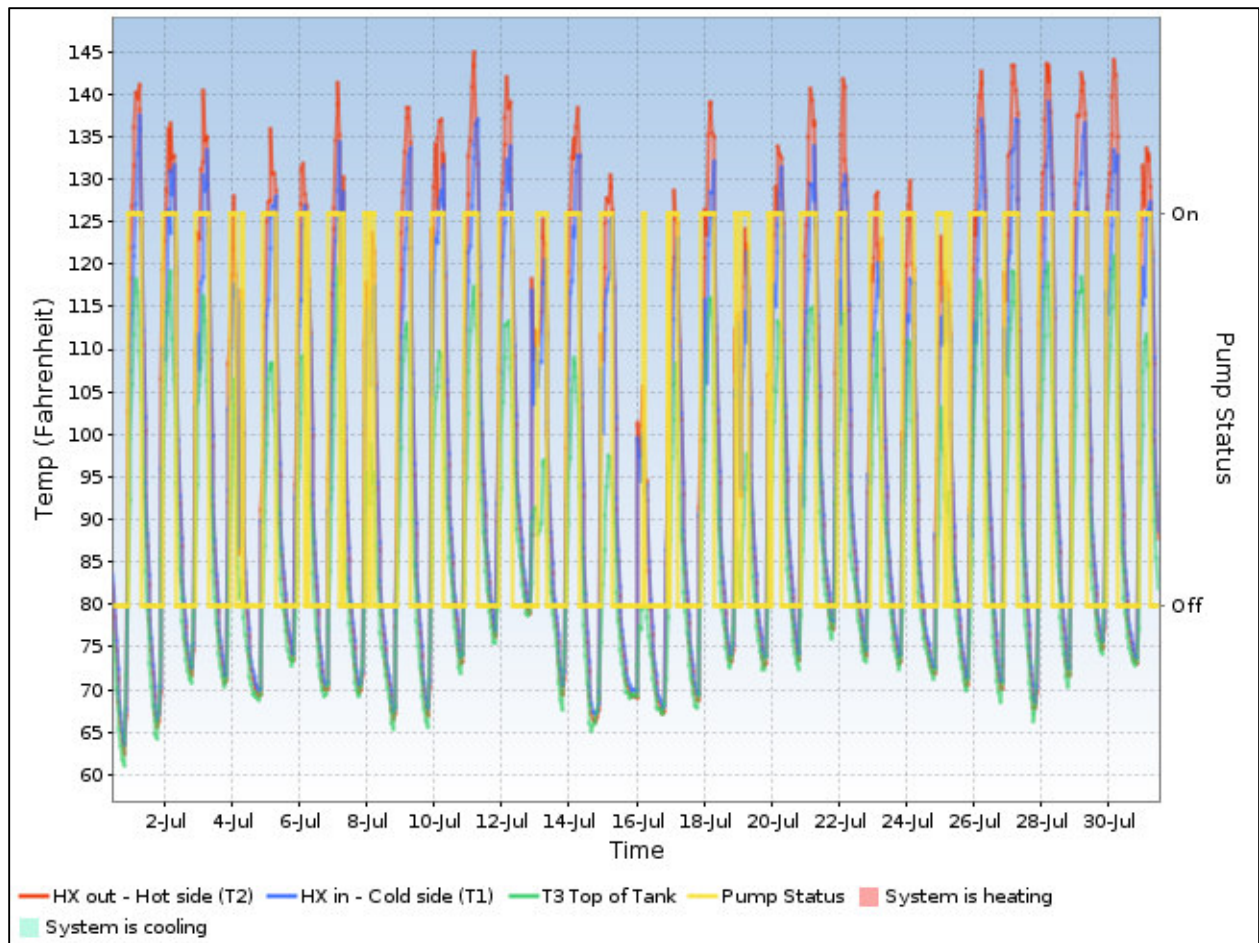
The SHW system was installed at RCA in July 2009. Hourly collection of solar-energy collection did not begin until May 2011;



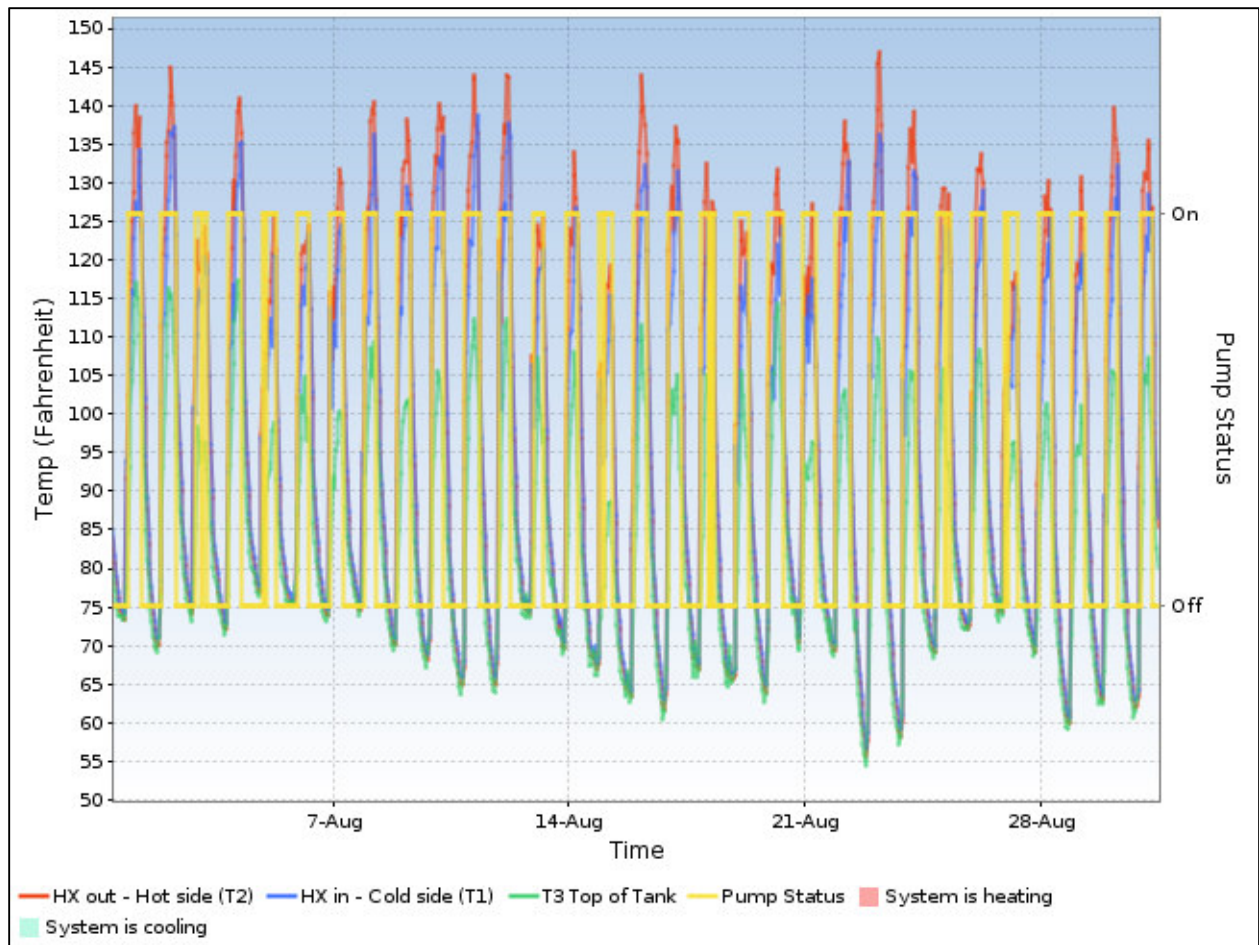
Usage = 727.49 kWh



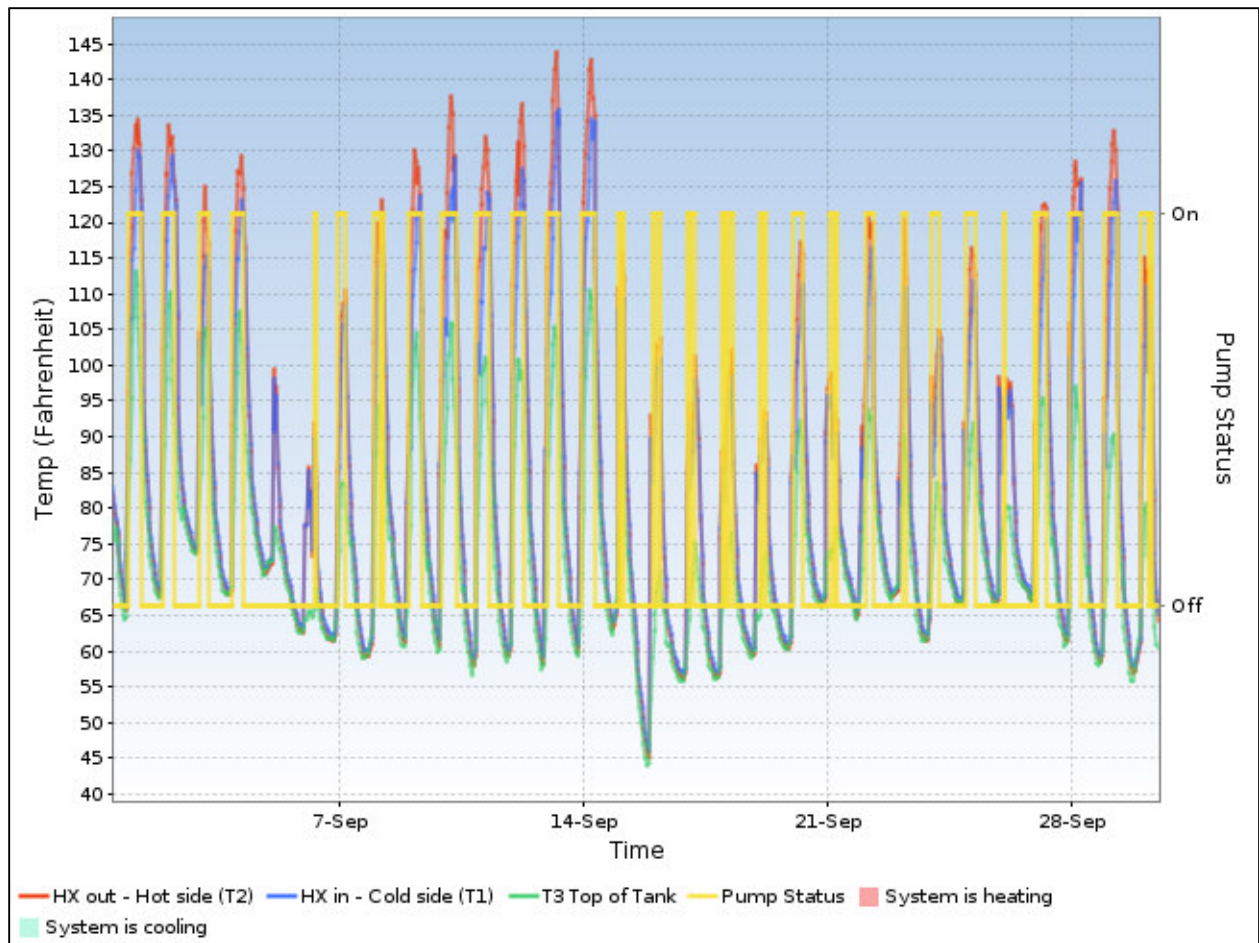
Usage = 985.42 kWh



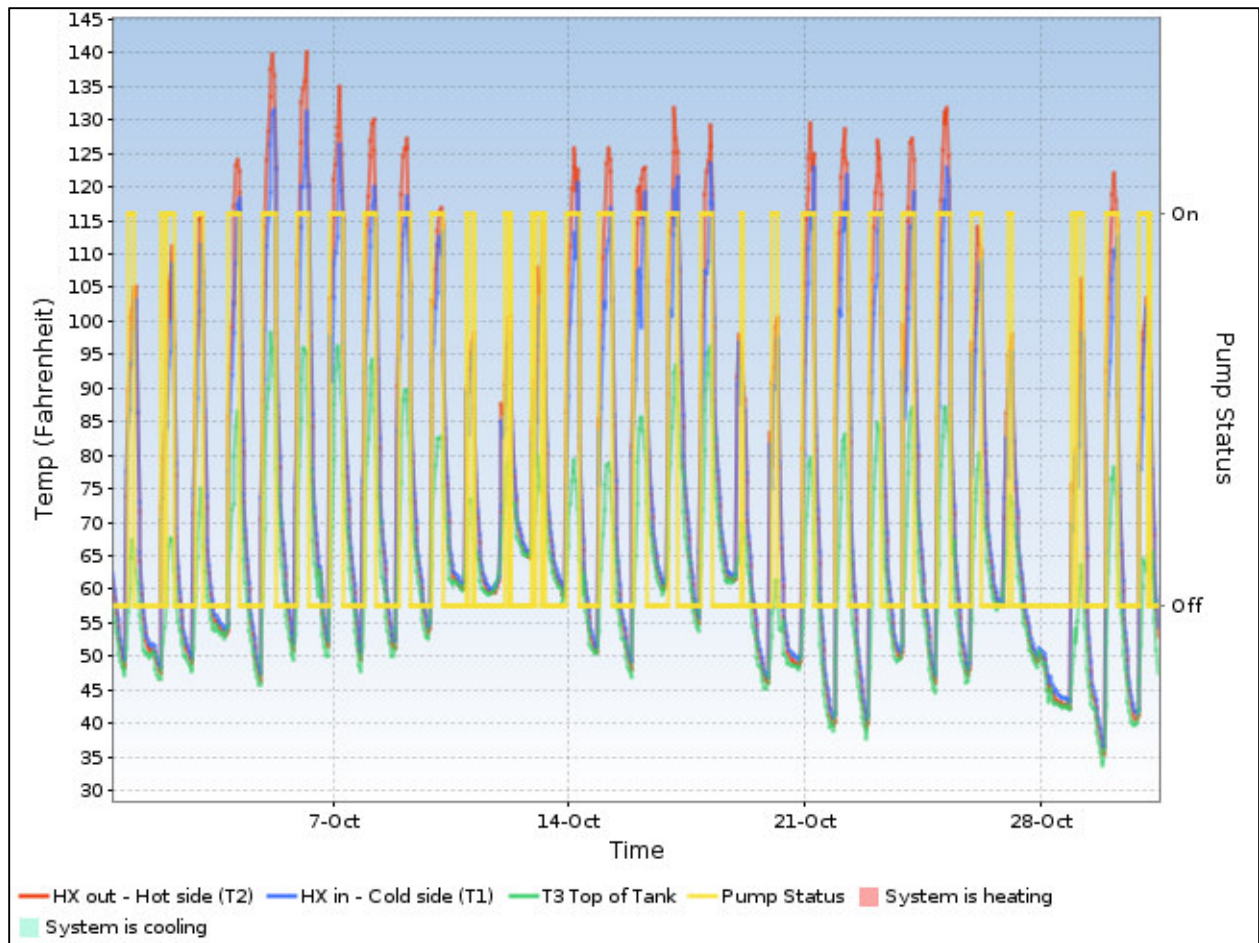
Usage = 1108 kWh



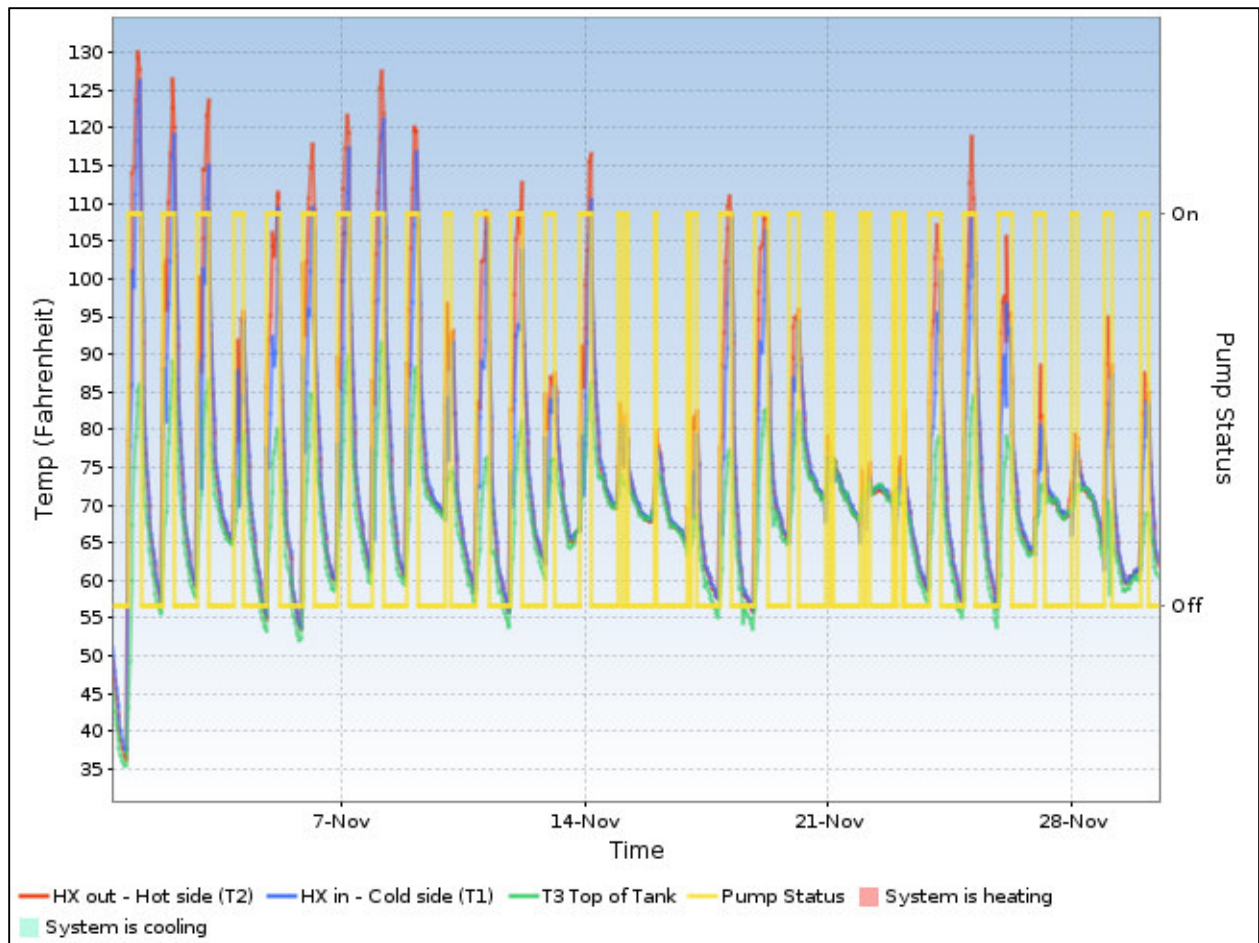
Usage = 1161 kWh



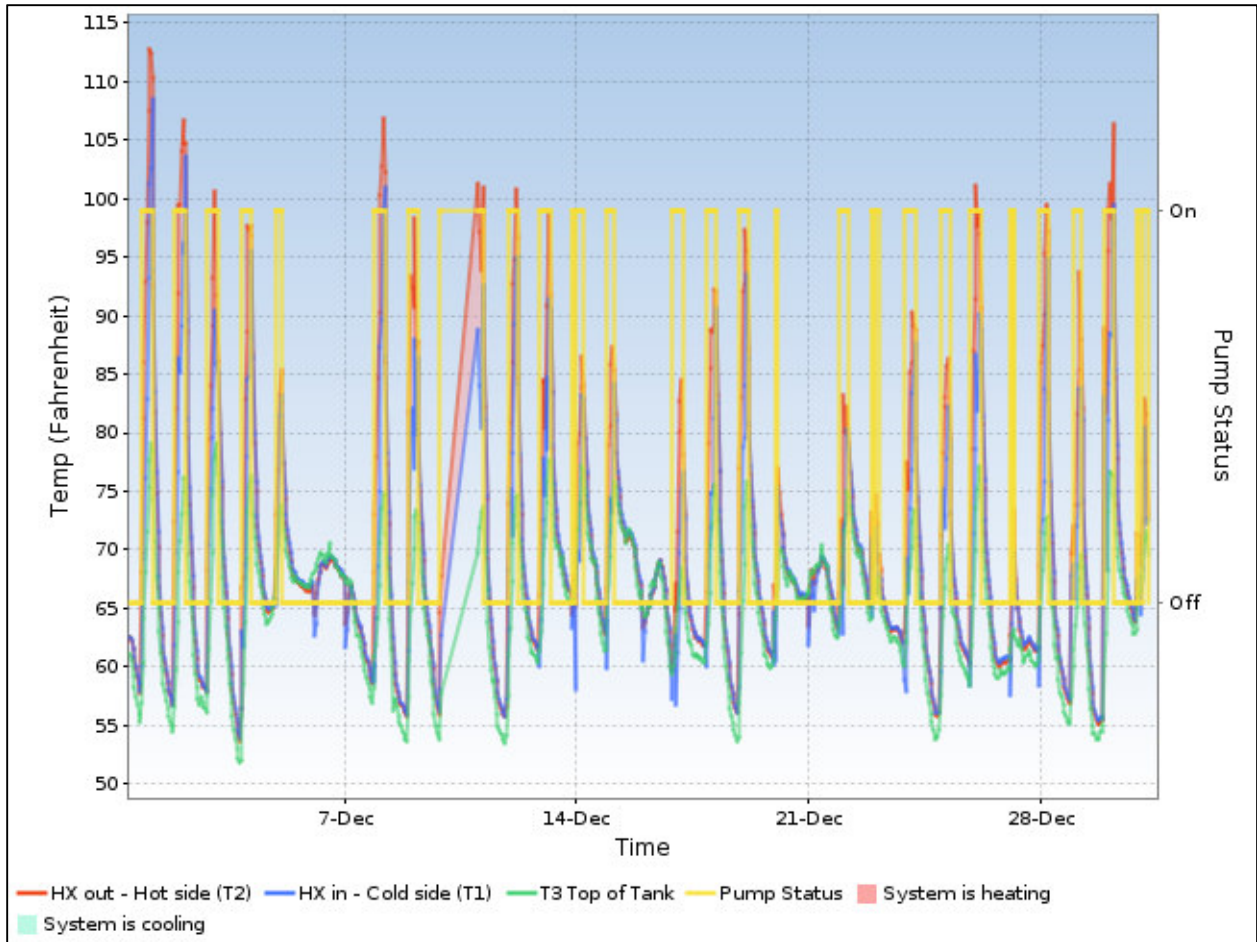
Usage = 753.17 kWh



Usage = 1035 kWh



Usage = 973.39 kWh



Usage = 727.49 kWh

