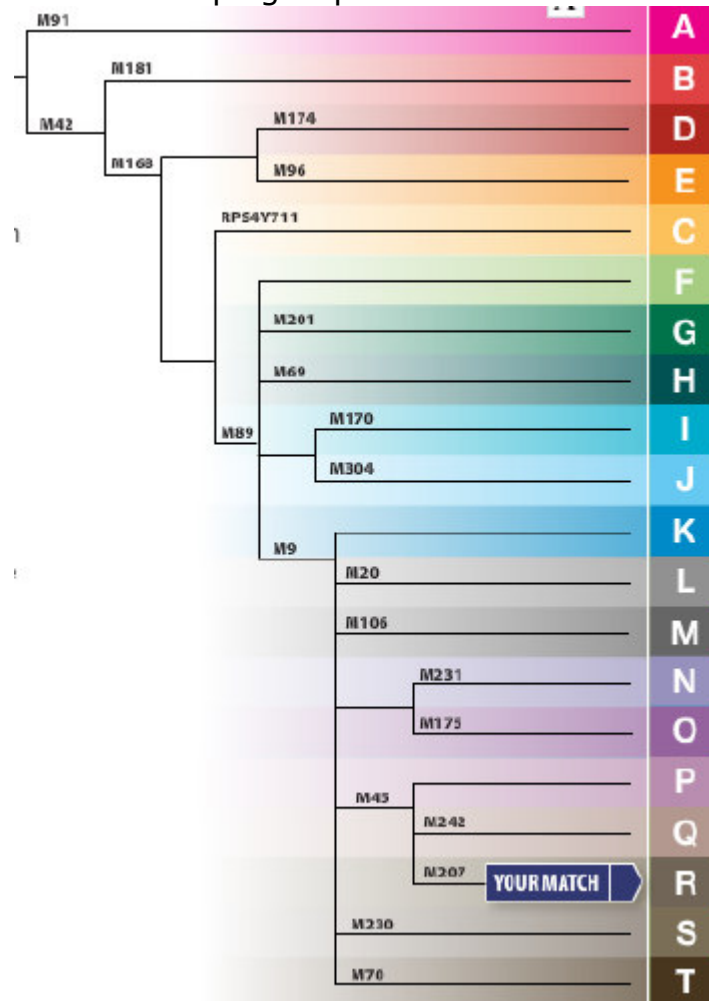


Y-chromosome R1b1b2a1a Haplogroup

L. David Roper
<http://arts.bev.net/RoperLDavid/>

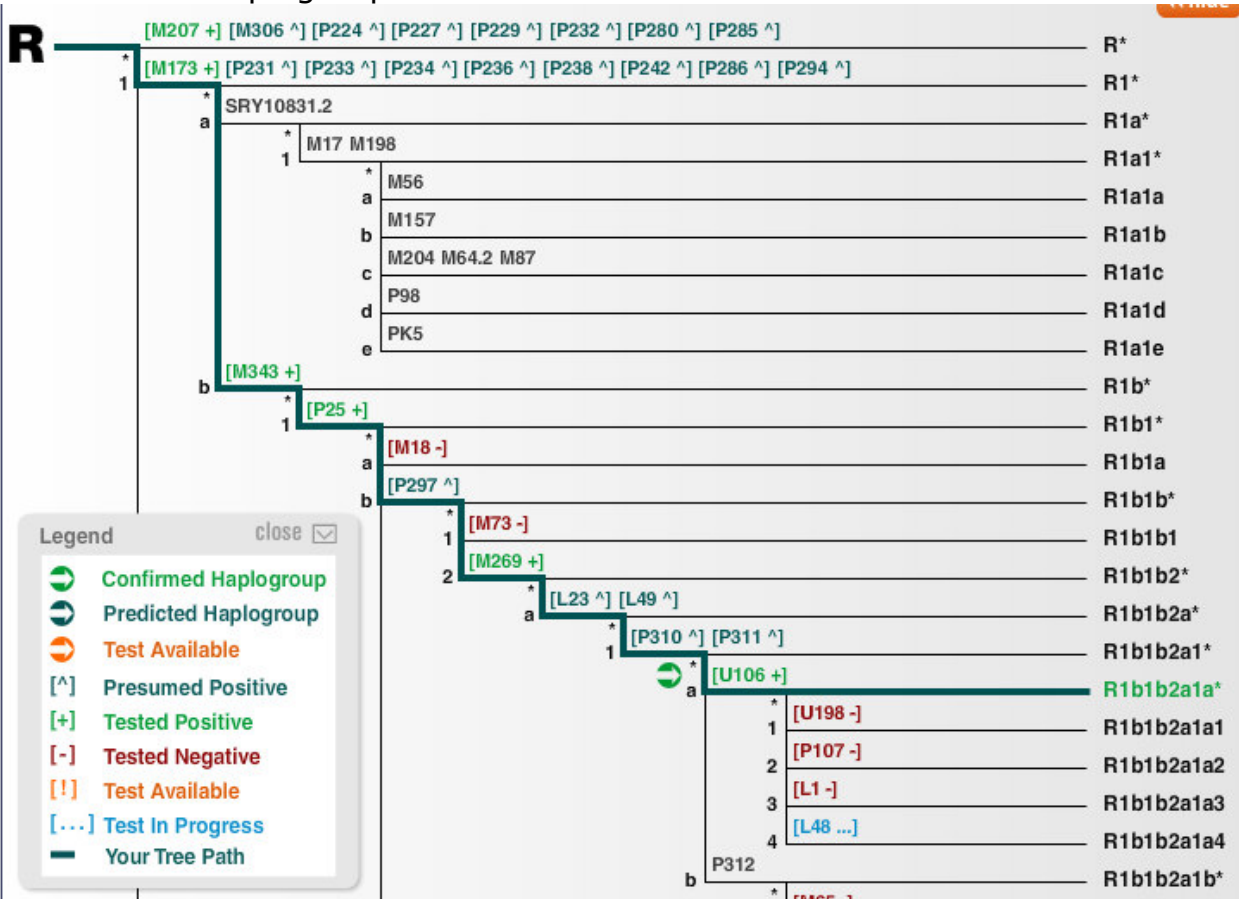
Here are some pictures that show information about the R1b1b2a1a haplogroup:

This one shows how the R haplogroup is related to all the others:



I am in R (R1b1b2a1a) haplogroup, in which are about 78% of Europeans. It is one of the youngest haplogroups. (A is the oldest.)

Here is the R haplogroup further divided:



Follow the green line for the R1b1b2a1a branch. I have ordered tests to further refine this haplogroup.

Here is the migration pattern for the R1b haplogroup.



This shows locations in orange for the R1b haplogroup now:

